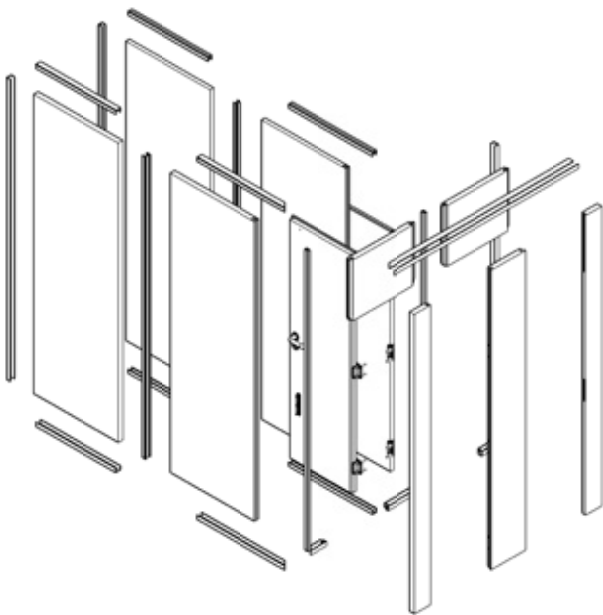


The following parts are required:

- Electric drill with various masonry and HSS bits
- Spirit level
- Small wooden wedges
- Various Philips screwdrivers
- Several wooden blocks height 15 cm
- Hammer
- Standard tools
- Aluminium saw

Short cuts for parts:

- SPL - Left side section
 SPM - Middle section
 SPR - Right side section
 TW/FTW- Partition
 SW - Side wall
 SCHW - Privacy screen
 TUL - Left door
 TUR - Right door



INSTALLATION INSTRUCTION

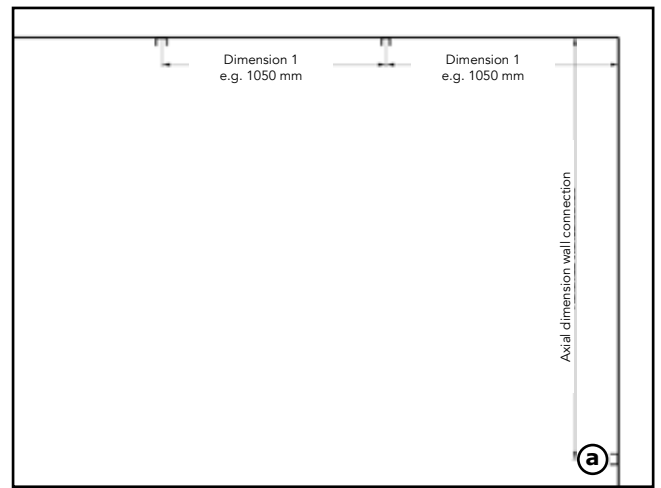
40 FB-LF



Marking the wall connections (U profiles)

The cabin axis dimensions (dimension 1) can be taken from your drawing if necessary. If no dimensions are specified, the width of the system is divided into equal parts. These axial dimensions are marked by a vertical line.

For the axial dimension of the wall connection "a", 27 mm must be added to the partition depth. Draw a vertical line with a spirit level and mark the holes.

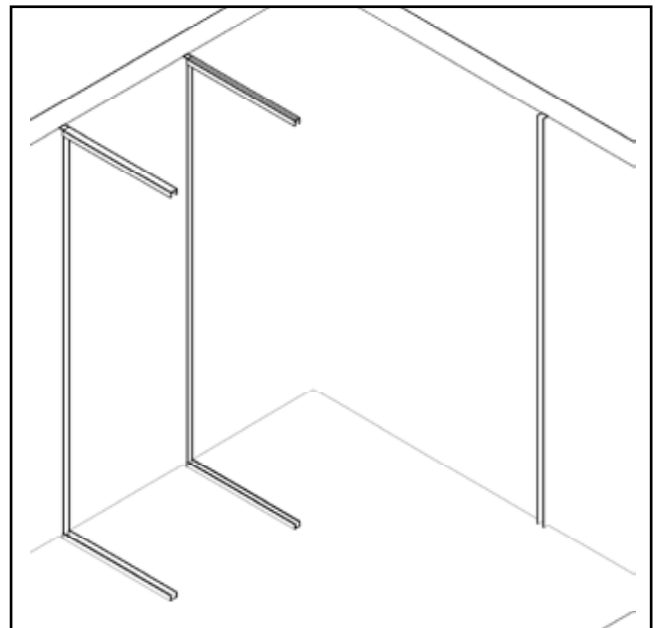
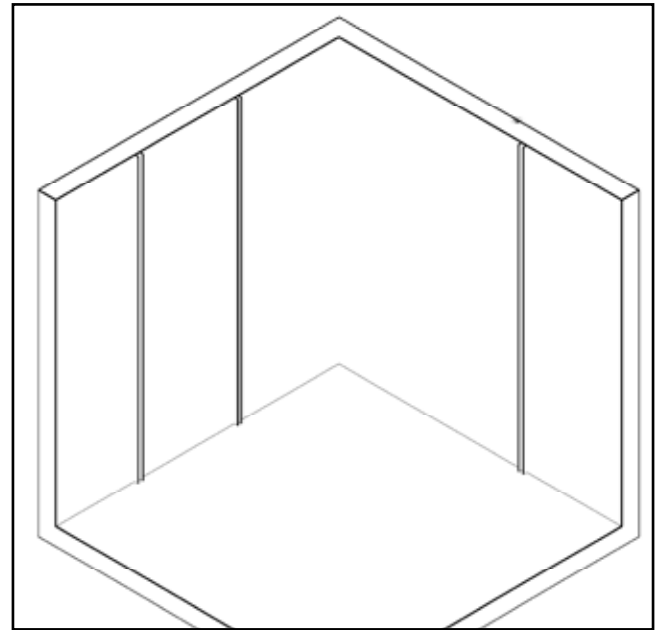


Fastening the U profiles

Pay attention to pipes or cables!
Drill the 8 mm holes and insert 8 x 51 mm wall plugs.
Fasten the U profiles with washers and 5 x 50 mm chipboard screws.

The following sequence must be observed:

- cut the vertically profile to length (from floor to ceiling) and fix them
 - cut the 30 mm U-profiles for the rear TW for floor and ceiling to length and fix them
 - cut the 40 mm U-profile for the rear SW for floor and ceiling to length and fix them
- Formula: SW-width minus 30 mm.



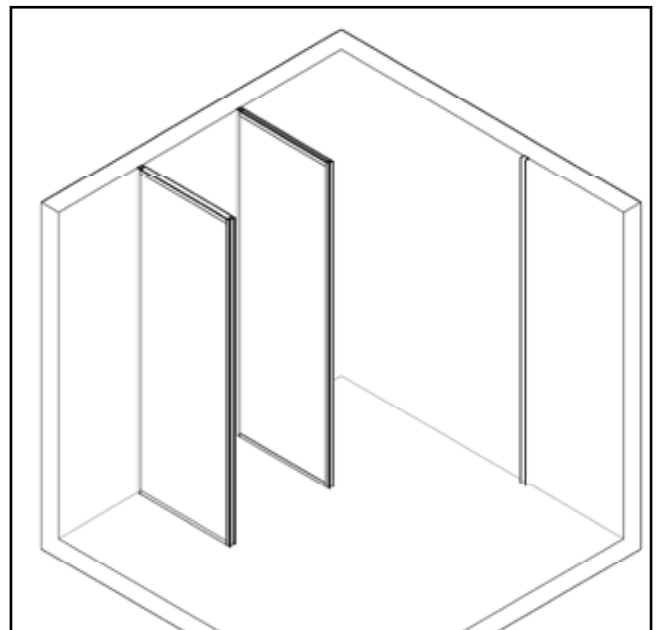
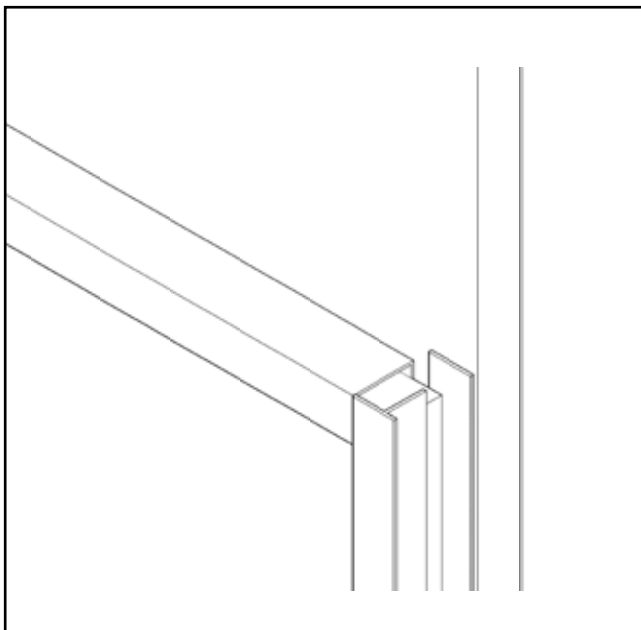
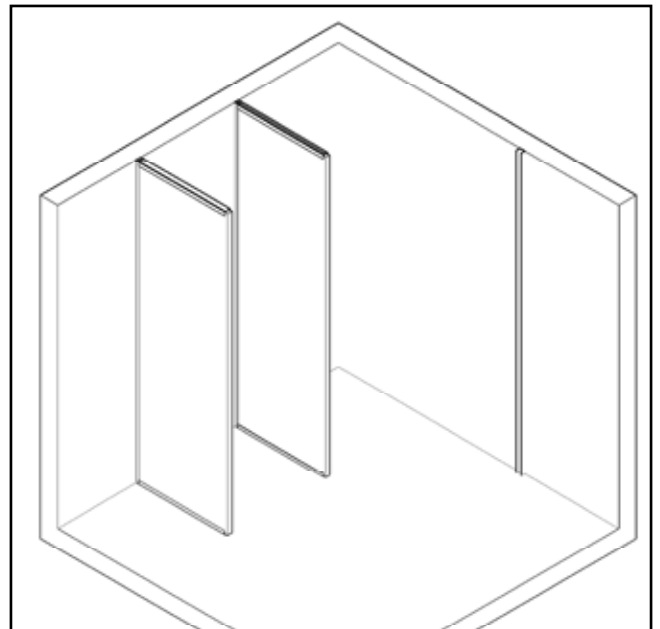
Installation of rear partition walls and side walls

Place the walls into the U-profiles.
Align them and pre drill 4,3 mm.

Now fix the TW und SW with screws 4,8 x 16 mm.

Cut the standard H-profile to length and fix it with screws 4,8 x 16 mm Schrauben on the TW.

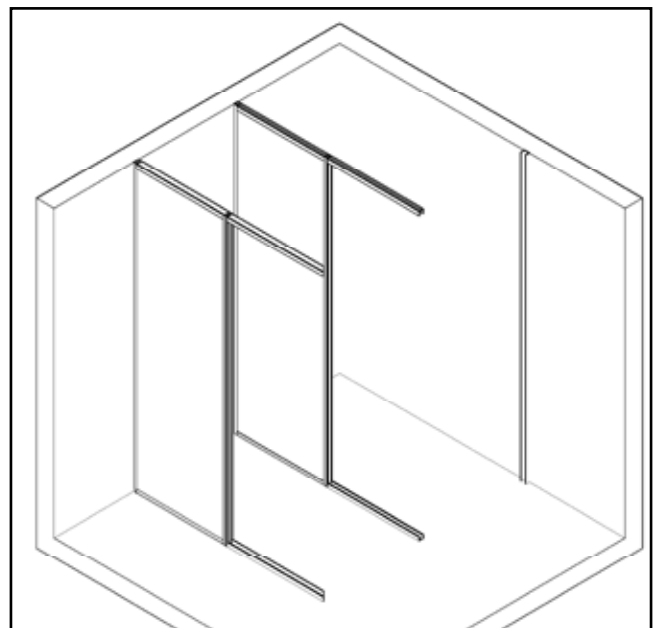
The SW will be handled in the same way.
Here the unravelled H-profile comes into operation.
Now all you have to do ist to glue on the supplied flat material.



Cutting and fixing of the front U-profiles for TW and SW on floor and ceiling

- cut the 40 mm U-profiles mm for the front of TW for floor and ceiling to length and fix them.
Formula: width of TW minus 7 mm.

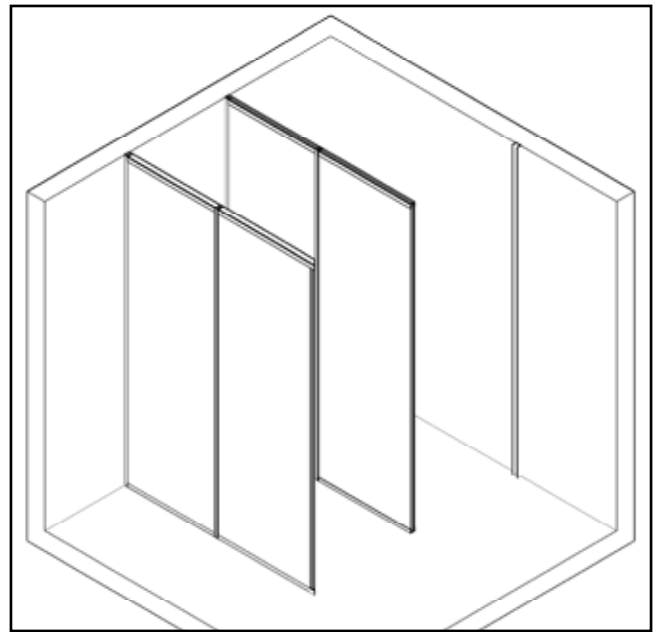
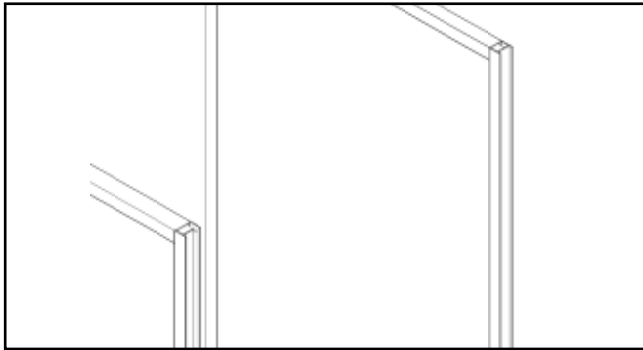
- cut the 40 mm U-profiles mm for the front of SW for floor and ceiling to length and fix them.
U-profiles are already mitre cut.
Formula: width of SW plus 35 mm.



Inserting of the front partition walls and side walls

Place the walls into the H-profiles.
Align the and pre drill 4,3 mm.

Now screw TW and SW with screws 4,8 x 16 mm together.

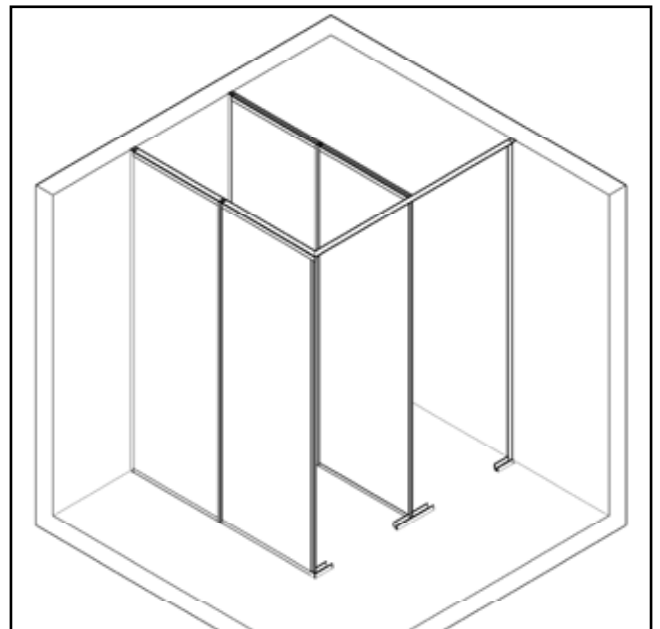


Cut to length and fixing of the U-profiles for front on floor and ceiling

Cut the U-profile 40 mm for floor and ceiling to length and fix them. If the cubicle contains a side wall, the profile is already cut to the right length. This also applies to the U-profiles for middle part and floor.

The U-profile for SPL or SPR has to be cut on site. The U-profile at the ceiling is already unravelled for the sections and mitred.

On site it only has to be cut to length.

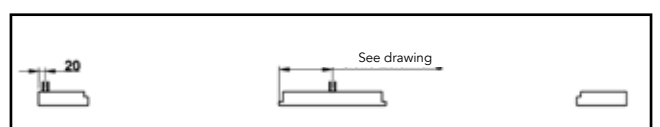
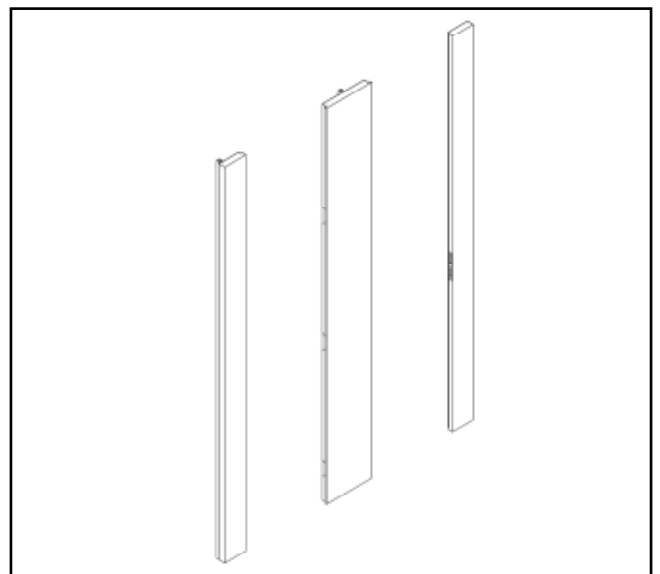
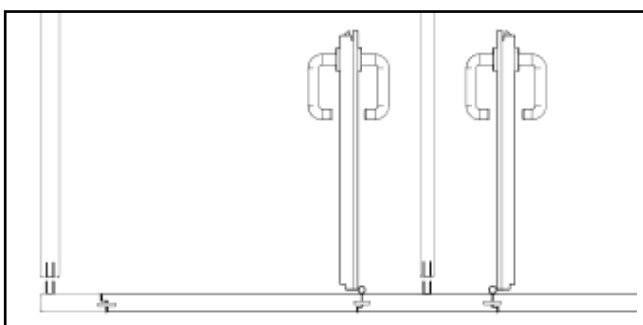


Now fix the U-profile (30/17/30) on the SSL and SPM. They already have the right length.

At the SSL par example the U-profile has to be fixed 20 mm axis from the edge. The mounting is done also with screws 4,8 x 16 mm.

Pre drill 2 mm deep with a 4,3 mm drill.

Before fixing the U-profile on the SPM it is necessary to take care on the classification in the drawing.



Inserting of front parts and panels

Insert the front parts into the U-profile groove of TW and SW.

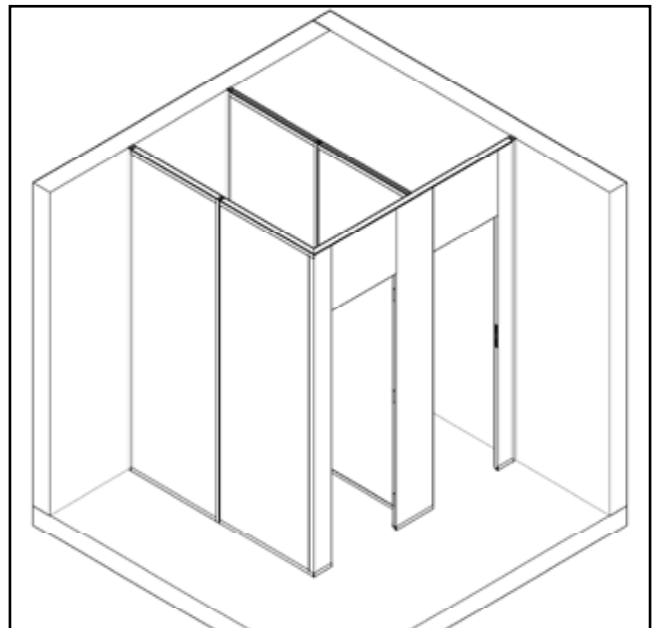
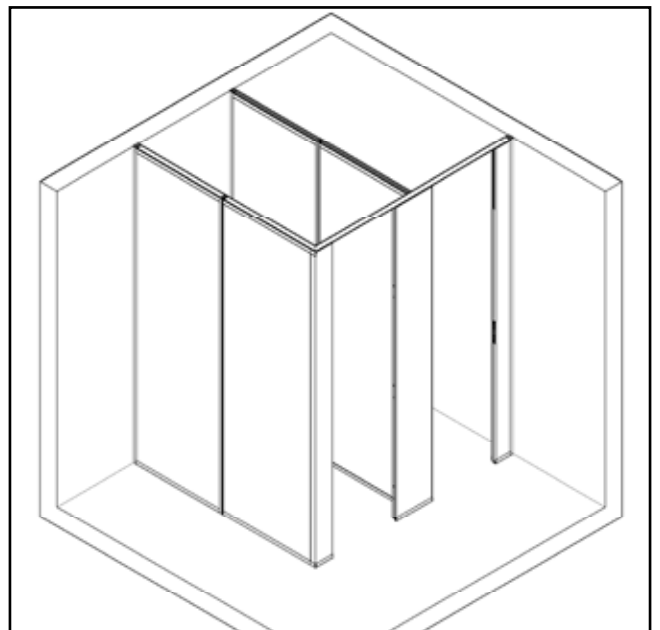
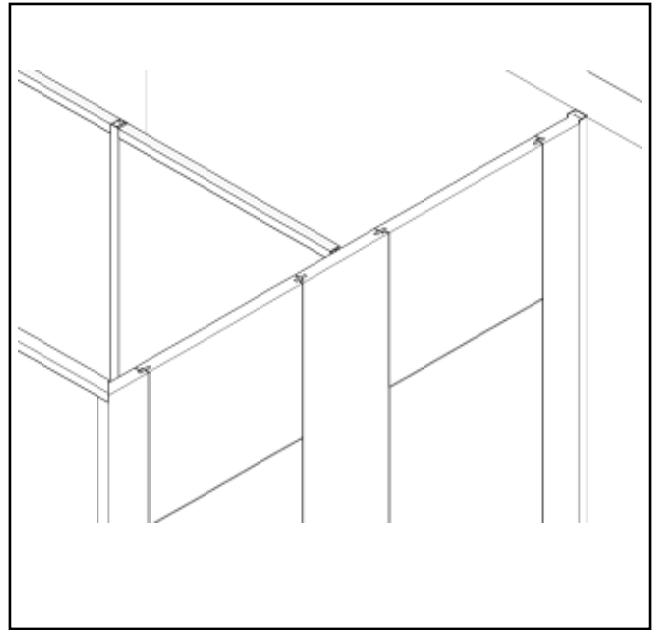
Press the SSL and the SPM firmly to the TW and SW, pre-drill, countersunk and fix it with banjo screw 4,5 x 25 mm.

Press the cover caps on the screws.

Put the SPR on the U-profile. Springs are already inserted in the panels. Put some glue in the groove of the front parts and insert the panels.

Please note that the panels must have the same spacing as doors.

Don't screw together yet.



Inserting of doors

Now hang the doors and fix the hinges with screws 5 x 50 mm.

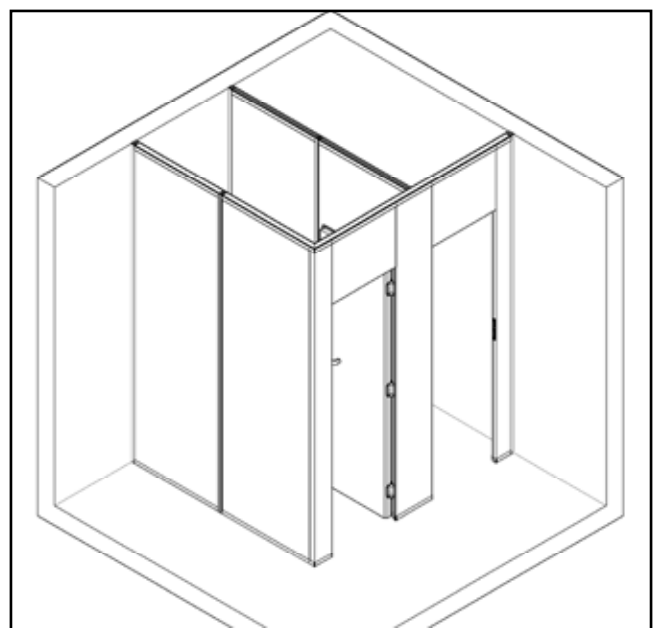
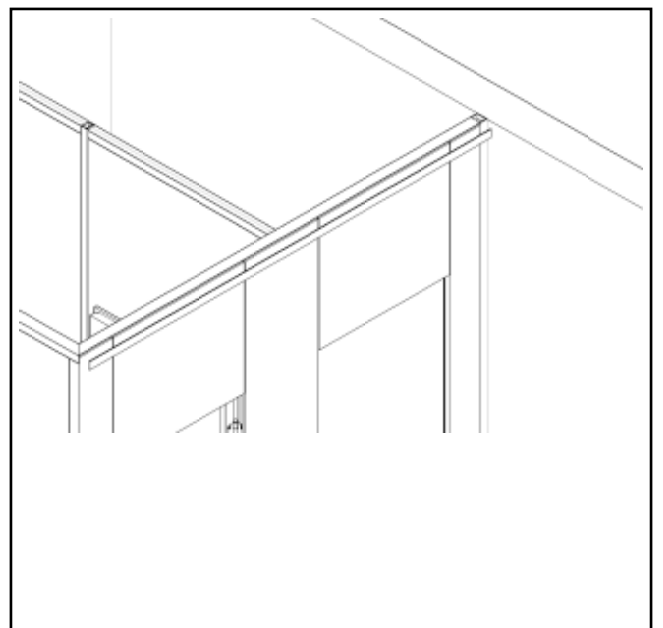
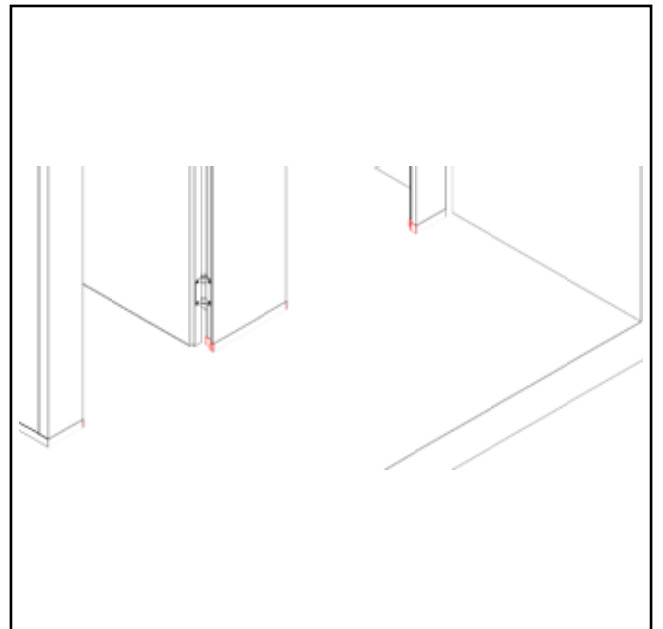
Alignment of the system

Check if the door stop is okay and if the spacing at door and panel is equal.

By lift and lower the TW and SW the door stop can be aligned.

Fix all parts from inside to the U-profiles and screw them with screws 4,8 x 16 mm.

Finally glue the already cut flat material below and above on the frontparts.



Mounting the handle set

Handle: Screw the base plates A + F together using 4 x 40 screws.

Clip on the handle rosettes (B), push the handle (C) and attach the counterpart (D).

Then lock the handles with the grub screw (E).

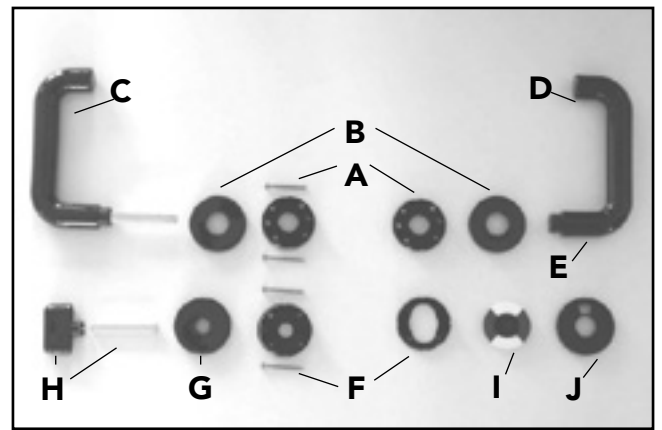
Locking: Clip on the cover rosette (G), join the bolt olive and square (H) and push them through the door.

Then place the red/white - disc (I) on top of it.

Note that white = open and red = closed).

Finally clip on the cover rosette (J).

Attention! Do not overtighten the screws, the door can be damaged.



General view of the completely assembled handle set



Mounting of hooks

The hooks are marked and fixed with 6 mm wall plugs and screws 4 x 25 mm.

Then push on the rosette.

Mounting of buffers

Mark the buffer at the height of the door handles.

The lower parts are fastened with a 8 mm dowel and screws 4,8 x 32 mm with washer.

Then press on the buffer.

